

# TOWN OF CHRISTIANSBURG ZONING AS OF JUNE 21 2011

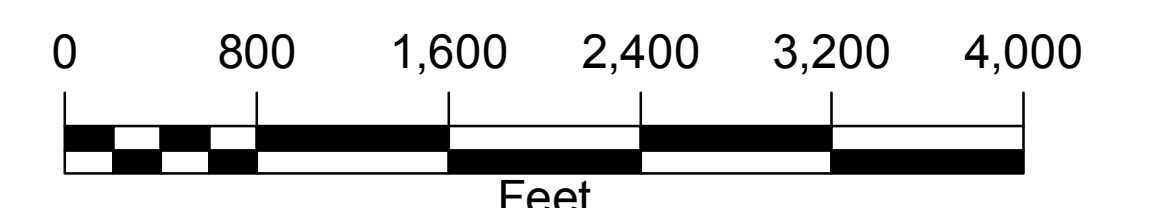
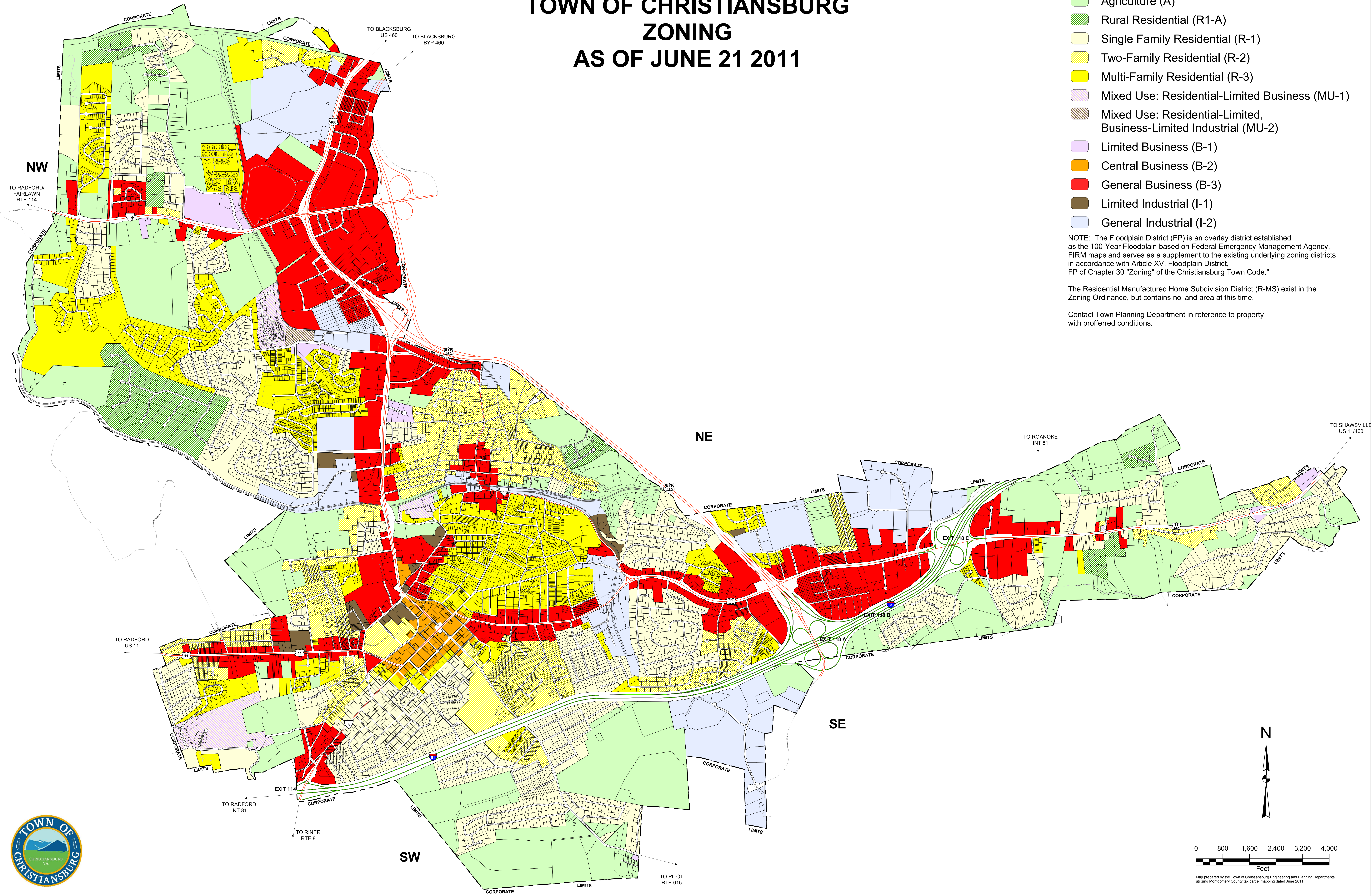
## ZONING DISTRICTS

- Agriculture (A)
- Rural Residential (R1-A)
- Single Family Residential (R-1)
- Two-Family Residential (R-2)
- Multi-Family Residential (R-3)
- Mixed Use: Residential-Limited Business (MU-1)
- Mixed Use: Residential-Limited, Business-Limited Industrial (MU-2)
- Limited Business (B-1)
- Central Business (B-2)
- General Business (B-3)
- Limited Industrial (I-1)
- General Industrial (I-2)

NOTE: The Floodplain District (FP) is an overlay district established as the 100-Year Floodplain based on Federal Emergency Management Agency, FIRM maps and serves as a supplement to the existing underlying zoning districts in accordance with Article XV. Floodplain District, FP of Chapter 30 "Zoning" of the Christiansburg Town Code."

The Residential Manufactured Home Subdivision District (R-MS) exist in the Zoning Ordinance, but contains no land area at this time.

Contact Town Planning Department in reference to property with proffered conditions.



Map prepared by the Town of Christiansburg Engineering and Planning Departments, utilizing Montgomery County tax parcel mapping dated June 2011.